

# Optra<sup>®</sup>

Innovative accessories



For **efficient**  
**restorative**  
**treatments**

Efficient  
Esthetics

ivoclar<sup>®</sup>  
vivadent<sup>®</sup>

# OptraGate®

## Moisture control made easy

---

OptraGate® is a latex-free lip and cheek retractor. The aid's unique flexibility and elasticity make it comfortable to wear and assist patients to keep their mouth open.

**Effective isolation** <sup>[1,2]</sup>  
due to easier access

Focused and **efficient**  
**treatment procedures** <sup>[1,2]</sup>

Used in over  
**100**  
**million** treatments to date\*

---



\* based on sales figures

# Esthetics are impossible without moisture control

---

Adequate isolation is essential for the successful placement of direct restorations to avoid any contamination of the cavity with saliva, secretion and blood.

Often, relative isolation is already sufficient to achieve good results and patient acceptance is high for this form of isolation. Irrespective of whether you are placing a composite filling or cementing a ceramic restoration, OptraGate is an effective and efficient aid that forms a sound basis for the long-term clinical success of esthetic restorations<sup>[3]</sup>.



Restoration of a deciduous tooth using relative isolation



Insertion of a partial crown on the LL6 using relative isolation

Pictures: courtesy of Dr med. dent. Knut Hufschmidt, Austria

1

2

3

4

5

6

7

## Efficient Esthetics

Products that are optimally coordinated for direct restorative procedures enhance the efficiency with which high-quality esthetic restorations can be achieved.



### 1 Isolate

Effective isolation<sup>[3]</sup> with **OptraGate**® and **OptraDam**



### 2 Bond

Direct intraoral application of **Adhese**® **Universal** with the efficient VivaPen®



### 3 Restore

**Tetric**® – The solution for all cavity classes



### 4 Contour

Time-saving contouring with **OptraSculpt**® due to its anti-stick effect



### 5 Cure

Reliable and fast curing with the **Bluephase**® curing units



### 6 Polish

High-gloss polishing in only one step with **OptraGloss**®



### 7 Protect

Immediate and controlled fluoridation with **Fluor Protector S**<sup>[16]</sup>

# Effective isolation thanks to easier access<sup>[1,2]</sup>

---

The lip and cheek retractor enables easy access to an enlarged treatment field. It is therefore easier for clinicians to recognize salivation, directly remove it and thus minimize the risk of contamination.

**OptraGate**  
for popular relative isolation

**OptraDam Plus**  
for absolute isolation<sup>[4-7]</sup>



# Focused and efficient treatment procedures <sup>[2]</sup>

Since OptraGate retracts the lips and cheeks evenly and gently, the need for using a dental mirror to assist in retracting soft tissue is eliminated. In addition, OptraGate also assists the patients in keeping their mouth wide

open for a prolonged time, benefiting efficient treatment procedures. The different colours available are designed to please children and increase their compliance.

# Versatile range of indications <sup>[2]</sup>

OptraGate provides a convincing solution in many different clinical situations, far more than just moisture control. Tiresome retraction of soft tissue is a thing of the past with OptraGate.



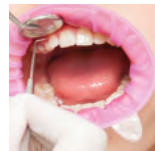
Intraoral scans



Prosthetics



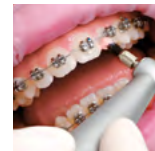
Restorative treatments



Professional care for children



Restorative treatment in children



Pediatric dentistry

Pictures: courtesy of Ivoclar Vivadent AG, Liechtenstein

“ As a clinician, I benefit from easy access to an enlarged treatment field and a streamlined procedure to achieve relative isolation. In addition, I am now able to perform many treatments without the help of a dental assistant. OptraGate allows me to focus completely on my patient and the clinical situation at hand. ”



**Dr med. dent. Knut Hufschmidt**  
Austria

OptraGate is placed within a few seconds.  
Placement is a piece of cake. See for yourself!



Click here for the video:

[www.ivoclarvivadent.com/OptragateFlowchart](http://www.ivoclarvivadent.com/OptragateFlowchart)




# OptraSculpt®

## Time-saving contouring due to anti-stick properties [8-10]

---

OptraSculpt® and OptraSculpt Pad are contouring instruments suitable for the non-stick shaping and contouring of surfaces. They are especially designed to shape unpolymerized sculptable composites in direct restorative treatments and to contour and smoothen paste-like laboratory composites [8,9].



**Outstanding esthetics [9]:**  
No instrument marks on  
the restoration surface

---

**Easy contouring**  
due to non-stick effect [8,9]

---

**Reduced effort**  
in finishing and polishing [9,10]



# Outstanding esthetics <sup>[9]</sup>

---

The contouring and shaping of state-of-the-art high-quality dental composites is a challenging task. Thanks to their non-stick coating, the OptraSculpt attachments provide remedy since no instrument marks are left on the material<sup>[10]</sup>. Special attachment shapes are available to minimize the risk of air entrapments<sup>[9,10]</sup> in the composite during application. Ultimately, a homogeneous surface design is a prerequisite to achieve esthetic results<sup>[10]</sup>.



Contouring with OptraSculpt Pad



Final outcome

**Reference scales on the instrument handle** support clinicians in achieving true-to-nature esthetic and anatomically shaped restorations<sup>[10]</sup>. The reference scales on the instrument handle provide easy comparison with average tooth widths and axis alignments in e.g. upper anterior teeth.



Reference scale 1



Reference scale 2

Pictures: courtesy of Ivoclar Vivadent AG, Liechtenstein

# Four shapes for the anterior and posterior region

The correct anatomical shape of the restoration is crucial to the overall health of the chewing system. The attachment shapes and working angle of the OptraSculpt Pad and OptraSculpt instruments have been especially adapted to suit anterior and posterior surfaces<sup>[8,9]</sup>. Correctly designed proximal marginal ridges facilitate the cleaning of interdental spaces. Moreover, smooth restoration surfaces minimize the accumulation of plaque<sup>[12,14]</sup>, and carefully created margins reduce the occurrence of secondary caries.



**OptraSculpt**  
for the posterior region



**Ball**  
Adaptation of  
composites



**Pointed tip**  
Professional contouring  
of fissures



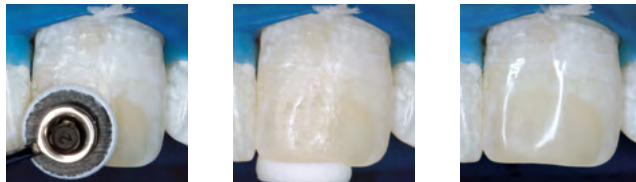
**Chisel**  
Contouring of proximal  
marginal ridges



# Easy adaptation due to non-stick effect <sup>[8,9]</sup>

---

The innovative two-component attachments allow you to achieve natural-looking restorations with little effort. The attachments' non-stick effect prevents the instruments from sticking on the composite material. Adaptation of composite material is very easy since no instrument marks are left on the material.



Pictures: courtesy of Dr Ronny Watzke, Ivoclar Vivadent, Liechtenstein

**OptraSculpt Pad**  
Homogeneous  
adaptation in the  
anterior region

# Reduced effort in finishing and polishing <sup>[9,10]</sup>

---

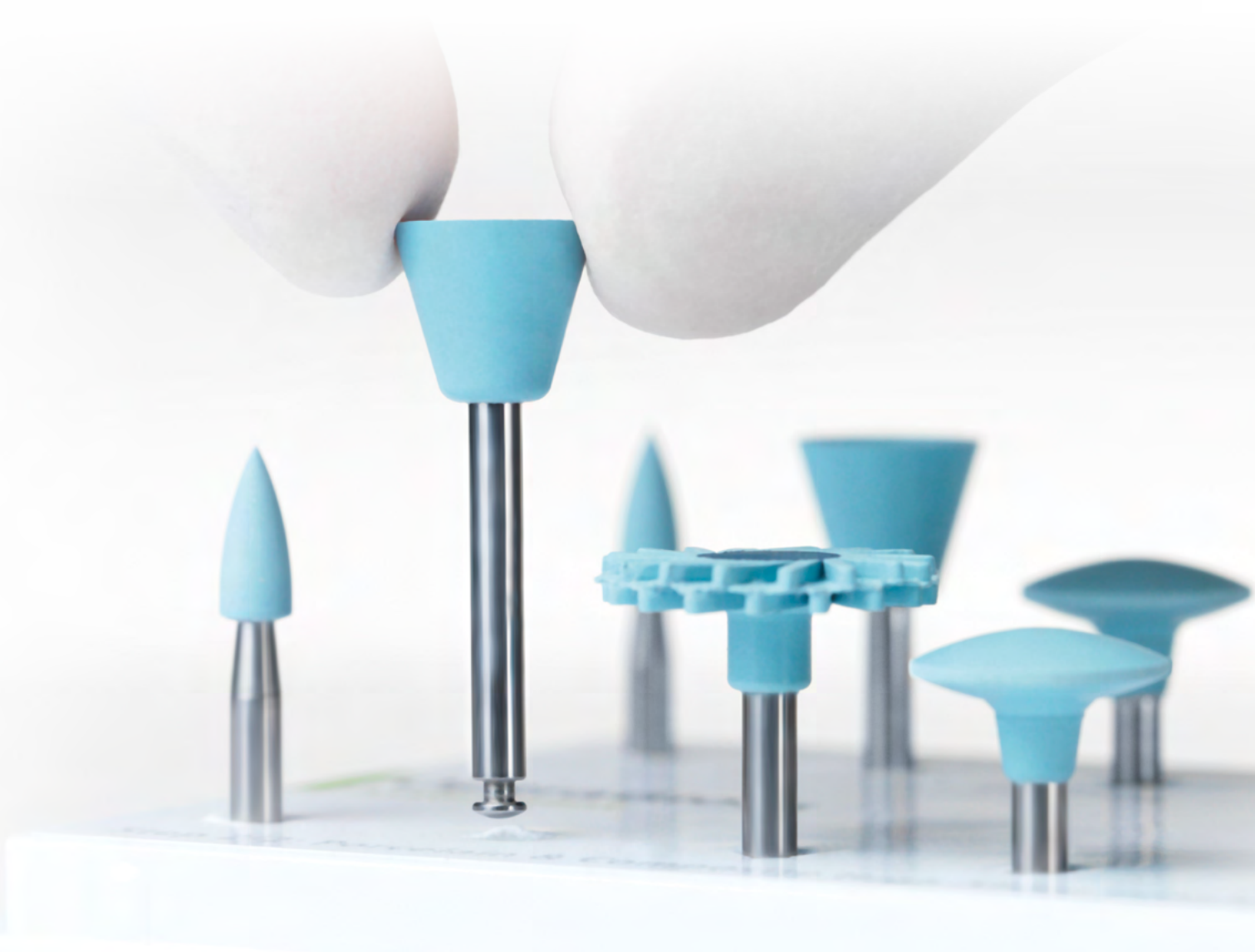
A mark-free, homogeneous contouring result allows you to streamline the finishing and polishing procedure and reduces the amount of time required to complete the restoration <sup>[8-10]</sup>.

# OptraGloss®

## Efficient polishing of composite resin restorations<sup>[11,12]</sup>

---

OptraGloss® are universal polishers coated with micro-fine diamond particles. The high-gloss polishers are ideally suited for the polishing of all popular composite resin fillings<sup>[11,12]</sup>.



OptraGloss® polishers are designed to meet the polishing needs of ceramic materials.

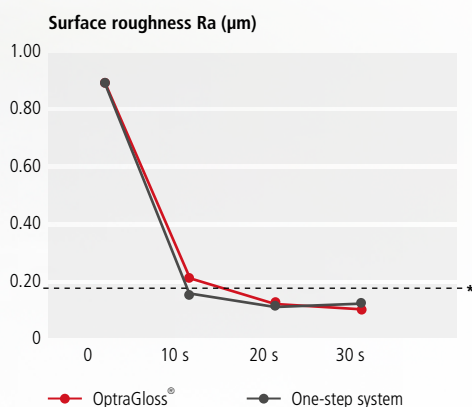
- Particularly smooth and shiny restoration surfaces<sup>[13]</sup>
- No additional polishing paste needed<sup>[12,14]</sup>
- High gloss of various ceramic surfaces in two steps<sup>[12]</sup>  
(e.g. IPS Empress® CAD and IPS e.max® CAD)

IDEAL FOR  
IPS e.max®

# High lustre in just one step<sup>[11,12]</sup>

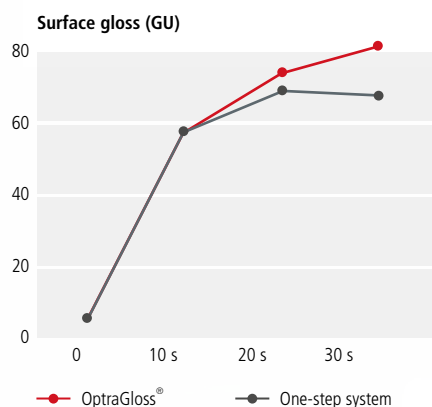
OptraGloss imparts a natural-looking, beautiful high lustre to composite resin fillings<sup>[12]</sup>. Due to a high diamond content of up to 70%wt, excellent polishing results are ensured<sup>[13]</sup>.

Smooth surfaces that minimize plaque retention<sup>[12,14]</sup>

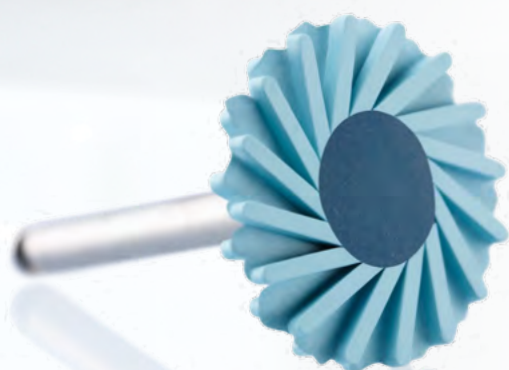


\* Clinically relevant threshold value (Bollen, C.M. et al., 1997)

Only a few seconds are needed to achieve an excellent surface gloss in one polishing step<sup>[11,12]</sup>



Sources: In-vitro tests involving competitive polishing systems; composites: Tetric EvoCeram<sup>®</sup> (Dr S. Heintze, Ivoclar Vivadent, Schaan, 2018)



## Spiral Wheel shape

**NEW**

One instrument for every  
tooth surface<sup>[15]</sup>

# Delivery forms

---

## OptraGate®

<b>Assortment</b> 40 x Size R (regular) 40 x Size S (small)	577275WW
<b>Refill R</b> 80 x Size R (regular)	590850WW
<b>Refill S</b> 80 x Size S (small)	590851WW
<b>Refill Junior</b> 80 x Size Junior	591451WW
<b>Refill R</b> 40 x Size R (regular)	683377WW
<b>Refill S</b> 40 x Size S (small)	683378WW
<b>Refill Junior</b> 40 x Size Junior	683376WW

## OptraGate® in blue and pink

<b>Small Assortment / blue and pink</b> 20 x Size S (small) blue 20 x Size S (small) pink	669088WW
<b>Junior Assortment / blue and pink</b> 20 x Size Junior blue	669089WW

## OptraDam Plus

<b>Assortment</b> 25 x Size R (regular) 25 x Size S (small)	627401AN
<b>Refill R</b> 50 x Size R (regular)	627399AN
<b>Refill S</b> 50 x Size S (small)	627400AN



## OptraSculpt®

<b>OptraSculpt &amp; OptraSculpt Pad System Kit</b>	683066AN
1x Instrument single-ended	
1x Instrument double-ended	
1x Refill pads 4mm/ 60	
1x Refill modelling tips (ball) / 20	
1x Refill modelling tips (chisel) / 20	
1x Refill modelling tips (pointed tip) / 20	
<b>OptraSculpt Starter Kit</b>	683067AN
1x Instrument double-ended	
1x Refill modelling tips (ball) / 20	
1x Refill modelling tips (chisel) / 20	
1x Refill modelling tips (pointed tip) / 20	
<b>OptraSculpt Next Generation Refill ball/ 60</b>	683068AN
Modelling tip: ball	
<b>OptraSculpt Next Generation Refill chisel/ 60</b>	683069AN
Modelling tip: chisel	
<b>OptraSculpt Next Generation Refill pointed tip/ 60</b>	683100AN
Modelling tip: pointed tip	
<b>OptraSculpt Refill instrument</b>	683154AN
Instrument double handed	

## OptraSculpt® Pad

<b>Assortment</b>	639791AN
1x Instrument single-ended	
1x Refill pads 4mm/ 60	
1x Refill pads 6mm/ 60	
<b>OptraSculpt Pad Refill 4mm/ 60</b>	639792AN
Pads 4 mm	
<b>OptraSculpt Pad Refill 6mm/ 60</b>	639793AN
Pads 6 mm	
<b>OptraSculpt Pad instrument Refill</b>	646004AN
Instrument single-ended	

## OptraStick

<b>Refill 48 pieces</b>	699972AN
-------------------------	----------

## OptraGloss®

<b>Assortment</b>	684548AN
2 x Flame PP (pre-polisher)	
2 x Cup PP	
2 x Lens PP	
2 x Flame HP (high-gloss polisher)	
2 x Cup HP	
2 x Lens HP	
2 x Spiral Wheel HP	
<b>OptraGloss Ceramic Kit</b>	684555AN
Flame PP (pre-polisher)	
Cup PP	
Lens PP	
Flame HP (high-gloss polisher)	
Cup HP	
Lens HP	
Spiral Wheel HP	
<b>OptraGloss Composite Kit</b>	701870AN
2x Flame HP (high-gloss polisher)	
2 x Cup HP	
2 x Lens HP	
2 x Spiral Wheel HP	
<b>OptraGloss Refill Flame PP</b>	684553AN
<b>OptraGloss Refill Cup PP</b>	684549AN
<b>OptraGloss Refill Lens PP</b>	684551AN
<b>OptraGloss Refill Flame HP</b>	684554AN
<b>OptraGloss Refill Cup HP</b>	684550AN
<b>OptraGloss Refill Lens HP</b>	684552AN
<b>OptraGloss Refill Spiral Wheel HP</b>	721094AN



- [1] Huth S., Clinical Statement on Design Validation of OptraGate, *Clinical Statement*, Ivoclar Vivadent, 2015.
- [2] K. Hufschmidt, Ein Hilfsmittel für fast alle Indikationen, *Study Report*, Wels, 2016
- [3] M. R. R. Cajazeira, T. M. De Sabóia, L. C. Maia, Influence of the operator field isolation technique on tooth-colored direct dental restorations, *Am J Dent*. 2014, 27, 155-159
- [4] Banerji S., Mehta S. B., Teeth isolation, *Practical procedures in aesthetic dentistry*, John Wiley & Sons, 2017, 113.
- [5] Borges A. B. et al, Isolation of the operating field, *Modern operative dentistry*, Springer, 2020, 223-260.
- [6] Diaz M. G. et al, Some considerations on absolute isolation, *MediSan* 2017, 21 (10), 3066-3076.
- [7] Horvath D., Horvath S., Kontaktpunktüberwindung in der modernen Kofferdamtechnik, *Die Quintessenz* 2010, 61, 23-33
- [8] N. Walther, OptraSculpt Handlingstest, *Test Report*, Ivoclar Vivadent, 2016.
- [9] L. Enggist, Use Validation OptraFoam Extension, *Test Report*, Ivoclar Vivadent, 2017
- [10] A. Peschke, S. Heintze, Designvalidierungstestbericht OptraFoam, *Test Report*, Ivoclar Vivadent, 2012
- [11] Dr. S. Heintze, In-vitro-Test konkurrierender Poliersysteme; Composite: Tetric EvoCeram®, *Test Report*, Ivoclar Vivadent, 2018
- [12] Dr. C. Pentelescu, Design-Validierungsbericht OptraFine 20, *Test Report*, Ivoclar Vivadent, 2018
- [13] Luzia Gründeler, FDS – Chemical Composition Standard, Ivoclar Vivadent, 2018
- [14] Morgan M. Finishing and polishing of direct posterior resin restorations. *Pract Proced Aesthet Dent* 2004;16:p 212, paragraph 2-3
- [15] Dr. C. Pentelescu, Untersuchungsbericht zum OptraGloss Spiralrad, *Test Report*, Ivoclar Vivadent, 2019
- [16] Bolis C et al., *Oral Health Prev. Dent.* 2015, 13, p. 545-556.