



formlabs  | dental

# Form 4B

Blazing Speed Meets Unmatched Accuracy

## Fast

A model  
every 49 seconds

## Versatile

15+ Formlabs and third-  
party resins

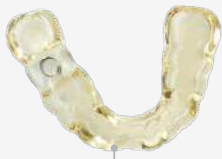
## Intuitive

Anyone can learn  
in 15 minutes

## Accurate

A perfect fit  
every time

Unprecedented print speeds. Print a dental model every 49 seconds.



**48 min**  
8 Surgical Guides



**9 min**  
11 Clear Aligner Models

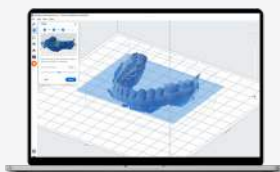


**49 min**  
8 Splints



**18 min**  
Over 100 crowns

Dentistry made easier through innovative solutions.



### PreForm Dental

Go from scan to print in a few clicks  
with pre-optimized settings using our  
free print preparation software.



### Auto-Dispense Resin Cartridge

A spillless cartridge with easy resin  
dispense simplifies resin handling for  
a hassle-free print process.



### Build Platform Flex

Minimize interaction time and speed  
up part removal for a safer, easier, and  
more efficient 3D printing process.



**Effortlessly create parts for any dental application.**

Choose from 15+ dental-specific resins including biocompatible resins developed and validated under a stringent QMS and produced in an ISO 13485-certified facility for peace of mind.

Achieve high-quality prints right out of the box with pre-optimized print settings.

Certified third-party materials and Open Platform available.

Experience identical prints anywhere on the build platform powered by Formlabs Low Force Display™ (LFD) technology.

Smooth surfaces and fine features for premium looking parts you'll be proud to deliver.



**Unrivalled accuracy that matches your commitment to a perfect fit, every time.**

Print dental parts with industry-leading surface accuracy of over 95% of data points within 50 µm of the original CAD data, consistent across the build platform.

## Form 4B Tech Specs

Technology	Low Force Display™ (LFD)	
Build volume (W x D x H)	20.0 × 12.5 × 21.0 cm   7.9 × 4.9 × 8.3 in	
Layer thickness (Y resolution)	25 - 300 microns	
XY resolution	50 microns	
Average print speed	40 mm/h	
Maximum print speed	100 mm/h	
Resin Tank lifetime	75,000+ layers with any Formlabs material	
Printer weight	18.3 kg   40.4 lb	
Printer dimensions	39.8 × 36.7 × 55.4 cm   15.7 × 14.5 × 21.9 in	
Warranty and service	One-year warranty included Paid service and extended warranty options available	
Software compatibility	Windows 7 and up	Mac OS X 10.12 and up
File types accepted	STL, OBJ, 3MF	

### Get in Touch

**US** +1 617 702 8476  
sales@formlabs.com

**EU** +49 1573 5993322  
eu-sales@formlabs.com

**UK/IE** +44 330 027 0040  
eu-sales@formlabs.com