

+  
WE  
KNOW  
ENDO.



**MAILLEFER**

## ProTaper Gold<sup>®</sup>

The same winning technique with **greater flexibility**

---

 Dentsply  
Sirona

# Trusted performance and predictable shapes

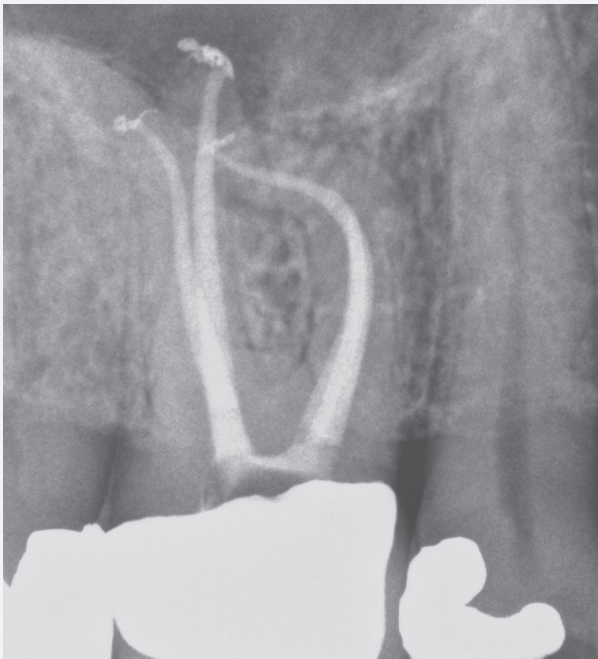
The ProTaper Gold® technology includes a series of “Shaping” and “Finishing” files that create the predictable ProTaper® shapes, and a system proven and trusted by clinicians throughout the world.

“We all know that shaping significant canal curvatures can be scary. Gold has given me a new level of confidence and control that turns this fear into fun.”

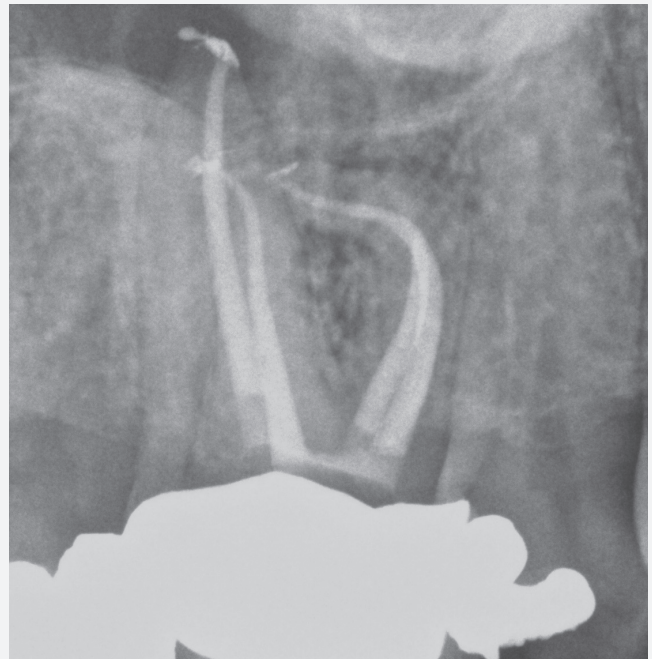
Dr. Jordan C. West, DDS, MSD



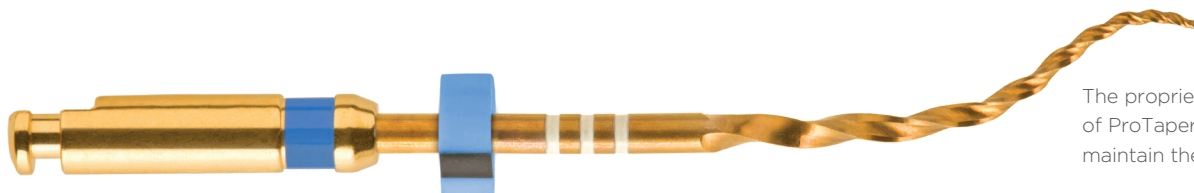
Pre Op View



Post Op Perpendicular View



Post Op Distal Oblique View



The proprietary processing of ProTaper Gold® allows it to maintain the canal curvature.<sup>1</sup>

<sup>1</sup> Gagliardi J, Versiani MA, de Sousa-Neto MD, Plazas-Garzon A, Basrani B. Evaluation of the Shaping Characteristics of ProTaper Gold®, ProTaper Next®, and ProTaper® Universal in Curved Canals. J Endod. 2015 Oct;41(10):1718-24.

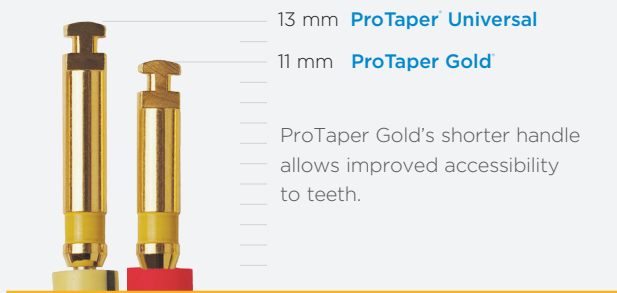
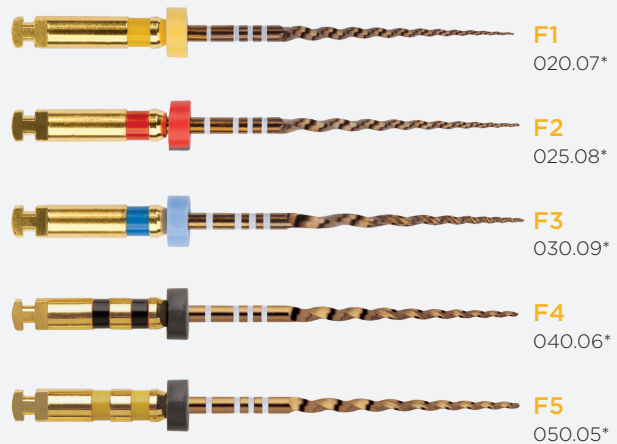
# Greater flexibility start-to-finish

The visibly advanced metallurgy of ProTaper Gold® creates a difference you can see – and feel. That’s because ProTaper Gold® rotary files feature the same exact geometries as ProTaper® Universal, but offer an increase in flexibility. This is especially important in the finishing files, when navigating challenging curves in the apical region.

**ProTaper Gold® shaping files** pre-enlarge canals and are designed to be used with the same familiar outstroke brushing technique.



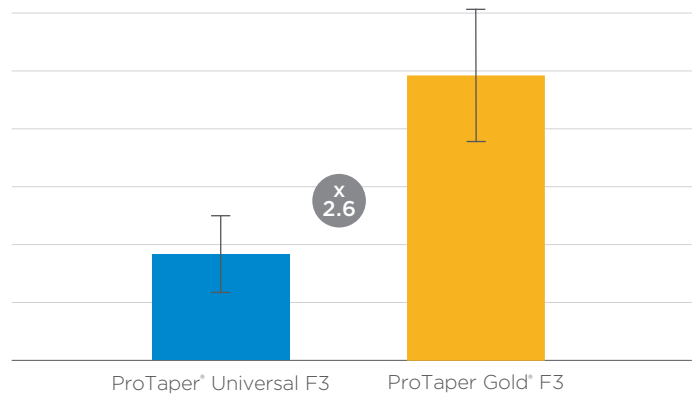
**ProTaper Gold® finishing files** are more flexible so you can shape and finish each canal with a complete system approach.



\*variable taper

# Greater resistance to cyclic fatigue

ProTaper Gold® provides more than twice the resistance to cyclic fatigue as ProTaper® Universal.\* And that’s an important advantage, because cyclic fatigue is the leading cause of file separation.<sup>2</sup>

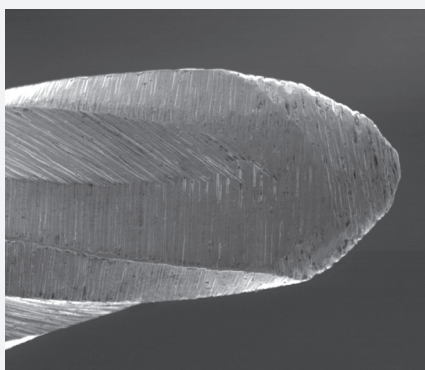


<sup>2</sup> Shen Y, Cheung GS, Bian Z, Peng B. Comparison of defects in ProFile and ProTaper® systems after clinical use. J Endod. 2006 Jan;32(1):61-5.  
\* Average value for ProTaper Gold® compared to ProTaper® Universal. Based on internal testing. Data on file.

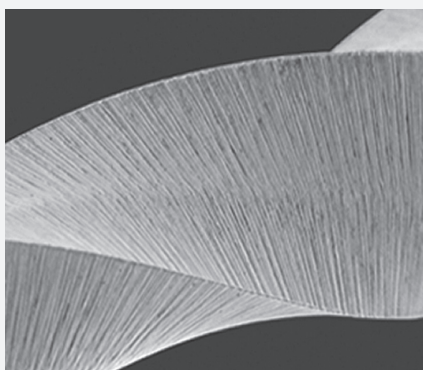
# Familiar efficiency

The majority of clinicians\* prefer ProTaper Gold® over ProTaper® Universal rotary files because they create the same smoothly tapered shapes as ProTaper® Universal<sup>3</sup> while delivering significant new advantages.

**You get enhanced flexibility and resistance to cyclic fatigue, with the familiarity of a complete file system you know and trust.**



The non-cutting tip design allows each instrument to safely follow the secured portion of the canal while the small flat area on the tip enhances its ability to find its way through soft tissue and debris.<sup>4</sup>



The convex triangular cross-section and progressive taper enhance cutting action while decreasing rotational friction between the blade of the file and dentin.<sup>5</sup>

ProTaper Gold® features a patented, progressively tapered design that has been trusted by dentists for more than ten years.



The ProTaper Gold® Conform Fit® gutta-percha with their variable taper predictably fit canals shaped with ProTaper Gold® and deliver warm gutta-percha up to 4 mm beyond the heat source. Corresponding paper points and Therafil® for ProTaper Gold® are available.



ProTaper Gold® uses the same rotary action and works with the same motor settings as ProTaper® Universal.



3 West J. Endodontic Update 2006. J Esthet Restor Dent. 2006; 18(5): 280-300. Review.

4 Blum JY, Machtou P, Ruddle C, Micallef JP. Analysis of mechanical preparations in extracted teeth using ProTaper® rotary instruments: value of the safety quotient. J Endod. 2003 Sep;29(9):567-75.

5 Berutti E, Negro AR, Lendini M, Pasqualini D. Influence of manual preflaring and torque on the failure rate of ProTaper® rotary instruments. J Endod. 2004 Apr;30(4):228-30.

\* Internal testing. Data on file.

**MAILLEFER**

# ProTaper Gold<sup>®</sup>

The geometries of ProTaper<sup>®</sup> with advanced metallurgy

## THEN

ProTaper<sup>®</sup> Universal sets a new standard in efficiency.

## NOW

The ProTaper<sup>®</sup> legacy continues with ProTaper Gold<sup>®</sup>:

- +24% increased flexibility<sup>\*\*</sup>
- x 2.6 greater resistance to cyclic fatigue<sup>\*\*\*</sup>
- Shorter 11mm handle

ProTaper Gold<sup>®</sup> features the same simplicity and smoothly tapered shapes you know and trust from ProTaper<sup>®</sup> Universal. Developed with proprietary advanced metallurgy, ProTaper Gold<sup>®</sup> rotary files offer greater flexibility for ProTaper<sup>®</sup> performance that's better than ever.

\*\* Average value for ProTaper Gold<sup>®</sup> compared to ProTaper<sup>®</sup> Universal. Based on internal testing. Data on file.

\*\*\* For ProTaper Gold<sup>®</sup> F3 finishing file. Average cyclic fatigue resistance of the ProTaper Gold<sup>®</sup> system is x 2.4 superior to the ProTaper<sup>®</sup> Universal system. Based on internal testing. Data on file.

# Product references



## ProTaper Gold® Files



**SX** STERILE  
19MM A 0410 219 G01 03



**S1** STERILE  
21MM A 0410 221 G01 03  
25MM A 0410 225 G01 03  
31MM A 0410 231 G01 03



**S2** STERILE  
21MM A 0410 221 G02 03  
25MM A 0410 225 G02 03  
31MM A 0410 231 G02 03



**F1** STERILE  
21MM A 0411 221 G01 03  
25MM A 0411 225 G01 03  
31MM A 0411 231 G01 03



**F2** STERILE  
21MM A 0411 221 G02 03  
25MM A 0411 225 G02 03  
31MM A 0411 231 G02 03



**F3** STERILE  
21MM A 0411 221 G03 03  
25MM A 0411 225 G03 03  
31MM A 0411 231 G03 03



**F4** STERILE  
21MM A 0411 221 G04 03  
25MM A 0411 225 G04 03  
31MM A 0411 231 G04 03



**F5** STERILE  
21MM A 0411 221 G05 03  
25MM A 0411 225 G05 03  
31MM A 0411 231 G05 03

### Assortment file packs

21MM SX/F3 A 0409 221 G01 03  
25MM SX/F3 A 0409 225 G01 03  
31MM SX/F3 A 0409 231 G01 03



## ProTaper Gold® Paper points



Box of 180x sterile paper points  
F1 A 241W 000 001 03  
F2 A 241W 000 002 03  
F3 A 241W 000 003 03  
F4 A 241W 000 004 03  
F5 A 241W 000 005 03

Box of 4x30, 1x60 sterile paper points  
F1-F5 A 241W 000 901 03



## ProTaper Gold® Conform Fit® gutta percha



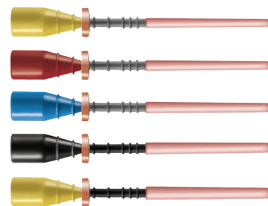
Box of 60x variable tapered gutta percha points

F1 B00PGGPF000F1  
F2 B00PGGPF000F2  
F3 B00PGGPF000F3

F2 & F3 B00PGGPF00F23  
F4 & F5 B00PGGPF00F45



## Thermafil® for ProTaper Gold®



Blister of 6x obturators

F1 A 1411 B00 001 00  
F2 A 1411 B00 002 00  
F3 A 1411 B00 003 00  
F4 A 1411 B00 004 00  
F5 A 1411 B00 005 00

Box of 30x obturators (5 blisters)

F1 A 1411 P00 001 00  
F2 A 1411 P00 002 00  
F3 A 1411 P00 003 00  
F4 A 1411 P00 004 00  
F5 A 1411 P00 005 00