

# IPS Empress® Direct

The highly esthetic composite



Effortless dental  
**masterpieces**

Efficient  
Esthetics

  
**ivoclar**  
**vivadent**  
passion vision innovation

# The composite for **highly esthetic** fillings

---

IPS Empress® Direct is a highly esthetic composite for filling cavities in anterior and posterior teeth. It is available in five different translucency levels. Therefore, different types of anatomical features can be faithfully reproduced.

**Lifelike shades** for natural-looking restorations

Easy application of shade nuances with **Trans Opal**

**Long-lasting** esthetic results

**Convenient handling** for sophisticated requirements

**Clever** mastery of demanding restorations





More than

25

million restorations  
placed worldwide<sup>1</sup>

---

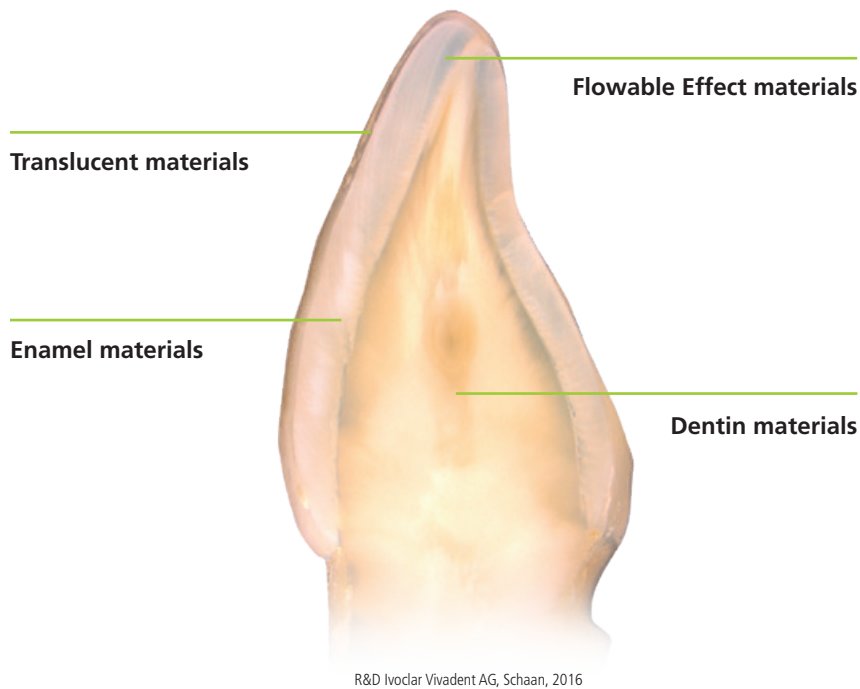
<sup>1</sup> Based on sales figures

# Lifelike shades for natural-looking restorations

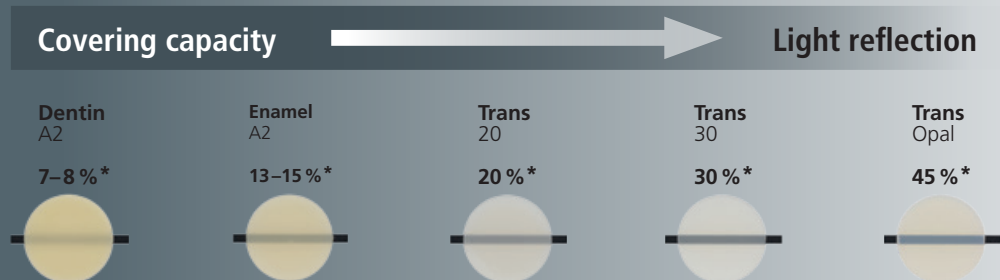
Since the dentin and enamel parts of the tooth do not have the same translucent properties, more than one single shade is needed to imitate the natural tooth structure and all its special optical features.

The IPS Empress Direct shade system is based on the principle that dentin structure is replaced by a dentin substitute and enamel structure by an enamel substitute. The dentin materials feature true-to-nature opaque properties and therefore influence the overall shade from within the tooth. The enamel

materials are more translucent. This allows light to scatter naturally in the dentin material. The three additional materials Trans 20, Trans 30 and Trans Opal are available for controlling light reflections in the incisal region. These effects closely imitate those of the existing tooth structure.



R&D Ivoclar Vivadent AG, Schaan, 2016



\* Sample value, Technical Data Sheet, Ivoclar Vivadent AG

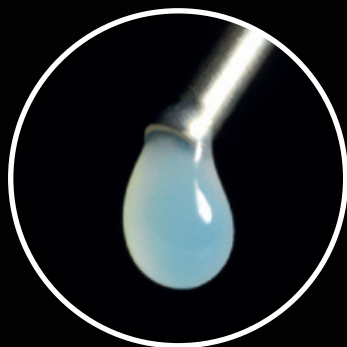


## Easy application of nuances with **Trans Opal**

---

In the teeth of young people in particular, the opalescent effect of the enamel manifests itself in a bluish-translucent appearance of the incisal edge. Opalescence is generally described as a light-scattering phenomenon within a translucent substance. An opalescent material has a bluish shimmer in reflected light. However, it has a reddish-orange appearance in transmitted light. The Trans Opal material allows these demanding shade requirements to be faithfully reproduced in one step due to its special micro-opal fillers.

Reflected light



Transmitted light

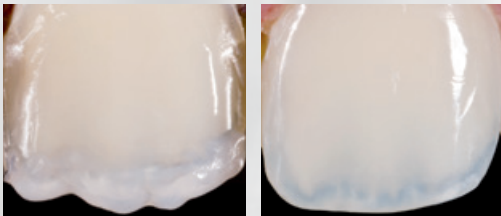


# True-to-detail characterization with **flowable Effect materials**

---

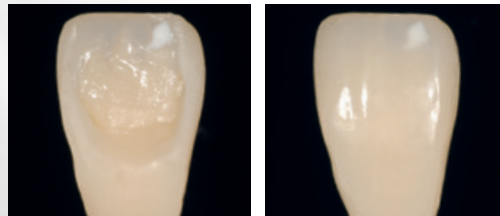
With the flowable characterization materials of the IPS Empress Direct Effect and IPS Empress Direct Color ranges any restorations can be creatively customized. The materials are simply applied just underneath the final covering layer.

## Accentuation of mamelons and application of opalescent effects with IPS Empress Direct Effect Trans Opal



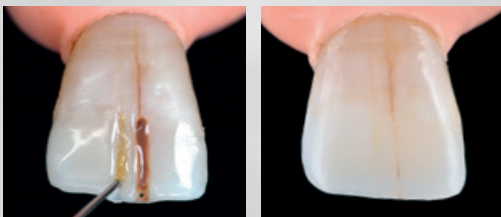
Dr Eduardo Mahn, Director Clinical Research,  
Universidad de los Andes Santiago, Chile

## Application of fluorosis marks with IPS Empress Direct Color white



Dr Markus Lenhard, Switzerland

## Imitation of enamel cracks with IPS Empress Direct Color ochre and brown



Dr Anton Lebedenko, Professional Service,  
Ivoclar Vivadent AG, Liechtenstein

# Precise shade selection

---

Two autoclavable shade guides, one for enamel and one for dentin materials, facilitate the selection of the suitable shade. The shade samples are made of superior quality ceramic. This assures optimum shade stability and therefore reliable shade selection.



“ There is no simpler or more efficient way to reproduce the effect of natural opalescence. IPS Empress® Direct Trans Opal is easy to polish and a high-gloss finish is achieved. ”

**Dr Markus Lenhard**  
Switzerland





## A long-lasting smile

---

Restorations made with IPS Empress Direct last for a long time. Since its introduction, IPS Empress Direct has been one of the leading esthetic composites on the market. More than 25 million fillings have been placed with the composite throughout the world\*. Many happy and satisfied patients attest to the product's long-lasting and esthetic properties. The case of a 33-year-old patient shows that the esthetic results remained constant over a seven-year period. Very little wear occurred.

\* Based on sales figures

Starting situation, 2007



Recall appointment after one week



Recall appointment after seven years, 2014



Dr Eduardo Mahn, Director Clinical Research, Universidad de los Andes Santiago, Chile





# Excellent longevity and esthetics

---

A study conducted by Prof. Dr Cerutti of Brescia University in Italy involved a total of 40 Class IV restorations, of which 20 were placed with IPS Empress Direct. After five years, 19 of the IPS Empress Direct restorations were checked. All of them were still *in situ* and intact. The data of the study confirms the excellent clinical performance and esthetic appearance of the restorations.

Ivoclar Vivadent AG, Liechtenstein, 2015

---

## Convenient handling and long-lasting gloss

A special filler formula is responsible for the excellent handling properties of the materials. They are easy to sculpt and contour and they nevertheless hold their shape. They adapt very well to the cavity wall, thereby reducing the risk of marginal gap formation and enhancing the clinical reliability of the procedure. Due to the optimum distribution of the different sized filler particles, IPS Empress Direct is efficiently polished to a long-lasting high gloss using the one-step OptraPol polishers.

# Clever mastery of demanding restorations

The IPS Empress Direct shade system is logically designed and therefore exceptionally easy to use: a dentin substitute replaces natural dentin and an enamel substitute replaces natural enamel. As a result, shade selection is a straightforward process and the material can be layered intuitively, even in complex cases.

Only a few steps to  
**lifelike restorations**



“ Anyone can become a master at creating highly esthetic composite restorations in only five steps. ”

**Dr Eduardo Mahn, Director Clinical Research**  
Universidad de los Andes Santiago, Chile



**Long working time**  
of more than 300 seconds<sup>1</sup>

**Short polymerization time**  
from 5 seconds; standardized for all shades<sup>2</sup>

**Quick polish to a**  
high gloss finish

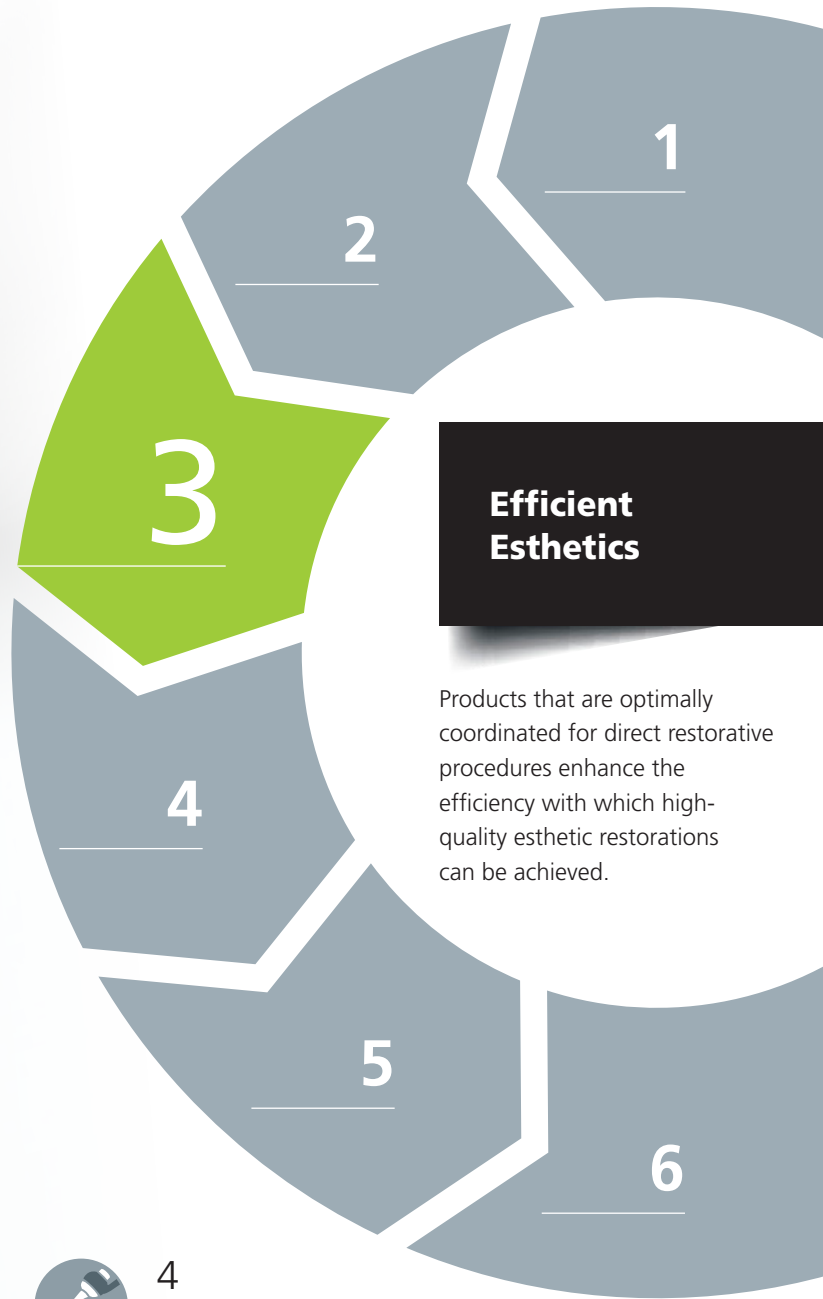
**Very good radiopacity**  
of more than 250 % Al<sup>3</sup>

<sup>1</sup> Example value  
<sup>2</sup> with Bluephase 2.0i  
<sup>3</sup> Example value, || PS Empress Direct Enamel



**Click here for the video:**  
[www.ivoclarvivadent.com/EmpressDirect-en](http://www.ivoclarvivadent.com/EmpressDirect-en)





## Efficient Esthetics

Products that are optimally coordinated for direct restorative procedures enhance the efficiency with which high-quality esthetic restorations can be achieved.



### 1 Isolate

Effective isolation with **OptraGate**<sup>®</sup>, cotton rolls and saliva ejector



### 2 Bond

Direct intraoral application of the adhesive **Adhese**<sup>®</sup> **Universal** with the efficient VivaPen<sup>®</sup>



### Restore

**IPS Empress**<sup>®</sup> **Direct** for natural-looking esthetic fillings

# 3



### 4 Contour

Time-saving contouring with **OptraSculpt**<sup>®</sup> due to its anti-stick effect



### 5 Cure

Reliable and fast curing with the **Bluephase**<sup>®</sup> curing units



### 6 Polish

High-gloss polishing in only one step with **OptraPol**<sup>®</sup>

# Delivery forms

## Refills

### Sculptable consistency available in 1 x 3-g syringe or 10 x 0.2-g Cavifils

<b>IPS Empress Direct Dentin</b>	A1   A2   A3   A3.5   A4   B1   B2   C3   D2   IVA5   IVA6   Bleach L Dentin   Bleach XL Dentin
<b>IPS Empress Direct Enamel</b>	A1   A2   A3   A3.5   A4   B1   B2   B3   B4   C1   C2   C3   D2   D3   Bleach L Enamel   Bleach XL Enamel
<b>IPS Empress Direct Translucent</b>	Trans 20   Trans 30   Trans Opal

### Flowable consistency available in 1 x 1.8-g syringe (including 5 tips)

<b>IPS Empress Direct Effect</b>	Trans 30   Trans Opal   Bleach XL
<b>IPS Empress Direct Opaque</b>	Opaque

### IPS Empress Direct Color available in 1 x 1-g syringe (including 5 tips)

<b>IPS Empress Direct Color</b>	white   honey   blue   violet   ochre   brown   grey
---------------------------------	------------------------------------------------------

## IPS Empress Direct System Kits

### SYRINGES

#### 686071AN

2 x 3 g Dentin (A2, A3)  
 3 x 3 g Enamel (A1, A2, A3)  
 1 x 3 g Trans 30  
 1 x 1.8 g Effect Trans Opal  
 1 x 1.8 g Opaque  
 1 x Autoclavable Shade Guide Dentin  
 1 x Autoclavable Shade Guide Enamel/Translucent  
 Various accessories

#### 686072AN

2 x 3 g Dentin (A2, A3)  
 3 x 3 g Enamel (A1, A2, A3)  
 1 x 3 g Trans 30  
 1 x 1.8 g Effect Trans Opal  
 1 x 1.8 g Opaque  
 1 x OpraSculpt Pad Instrument  
 1 x OpraSculpt Pad Refill (4 mm)  
 1 x Autoclavable Shade Guide Dentin  
 1 x Autoclavable Shade Guide Enamel/Translucent  
 Various accessories

### CAVIFILS

#### 686093AN

20 x 0.2 g Dentin (A2, A3)  
 30 x 0.2 g Enamel (A1, A2, A3)  
 10 x 0.2 g Trans 30  
 1 x 1.8 g Effect Trans Opal  
 1 x 1.8 g Opaque  
 1 x Autoclavable Shade Guide Dentin  
 1 x Autoclavable Shade Guide Enamel/Translucent  
 Various accessories

#### 686095AN

20 x 0.2 g Dentin (A2, A3)  
 30 x 0.2 g Enamel (A1, A2, A3)  
 10 x 0.2 g Trans 30  
 1 x 1.8 g Effect Trans Opal  
 1 x 1.8 g Opaque  
 1 x OpraSculpt Pad Instrument  
 1 x OpraSculpt Pad Refill (4 mm)  
 1 x Autoclavable Shade Guide Dentin  
 1 x Autoclavable Shade Guide Enamel/Translucent  
 Various accessories

## IPS Empress Direct Color Assortment

#### 637898AN

7 x 1 g IPS Empress Direct Color  
 1 x 1.8 g IPS Empress Direct Opaque  
 Various accessories

## Accessories

#### Tips 20 x 0.4 mm

**634847**  
 IPS Empress Direct Color



#### Tips 20 x 0.9 mm

**634849**  
 IPS Empress Direct Effect  
 IPS Empress Direct Opaque



#### IPS Empress Direct Pad

**628369**



#### Autoclavable Shade Guide

**Enamel/Translucent**  
**627215**



#### Autoclavable Shade Guide

**Dentin**  
**627214**





**Ivoclar Vivadent AG**  
Benderstr. 2  
9494 Schaan  
Liechtenstein  
Tel. +423 235 35 35  
Fax +423 235 33 60  
[www.ivoclarvivadent.com](http://www.ivoclarvivadent.com)

627645/EN/2018-09

  
**ivoclar**  
**vivadent**<sup>®</sup>  
passion vision innovation