

MOBILE DENTISTRY

MOBILE
DENTISTRY



Dentalone

Mobile Dental Unit Cart

Helping You Care. Anywhere.*

Dentalone offers a large range of instruments and extended functionalities, thus practitioners can realise dental treatments outside any dentist's office:

Advantages

- Compact
- Simple to use
- Mobile
- Plug and Play system
- Easy to carry
- User-friendly
- Extensible to Cart function
- Large range functionalities

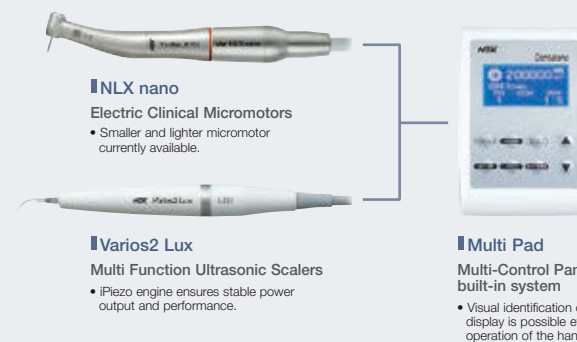


*electricity supply required

Features

- All components pack into case with carrying handle
- Up and down function of control unit and instrument carrier which is barrier fully for treatment position
- Small and light complete unit.
- Instrument carrier with automatic selection of instruments and easy positioning
- Integrated compressor for irrigation & syringe
- Universal voltage switchable (AC 100-230 V)

- Illuminated LCD control panel Multi Pad
- 40,000 min⁻¹ autoclavable brushless NLX nano micromotor with LED light, internal water and titanium body
- Integrated multi function ultrasonic scaler Varios 170 with LED light, slim and light weight VA2-LUX-HP handpiece
- 3-way air / water / spray syringe with LED light
- Saliva complete suction
- 500 mL water tank
- 1 Liter waste container



Dentalone

Mobile Dental Unit Cart

The Dentist's Office Mobile Cart

Dentalone is the dentist's office mobile cart which is provided for operative or preventive dentistry in the field such as Humanitarian, Home Care, Schools, and Army & Hospitals.



Dentalone

Complete Set



MOBILE DENTISTRY

Dentalone Complete Set

MODEL **Dentalone** ORDER CODE **S9070**

Contents

- 1 Carrying Case
- 1 Water tank for spray
- 1 Tank for vacuum
- Built in compressor
- Built in suction pump
- 1 Variable Foot Control
- 1 Extendable Tablet

Specifications




- Dimensions : Case with trolley (unpulled trolley handle) : W 351 x D 405 x H 545 (mm)
Case with trolley (pulled trolley handle) : W 351 x D 405 x H 1,075 (mm)
Without case : W 350 x D 405 x H 496 (mm)
- Working height : 766 mm
- Weight with case : 18.5 kg
- Power Supply : AC 100-230 V 50/60 Hz

VIVAace Mobile Dentistry System

Wherever Possible

For more comfortable & more advanced home visits for dental treatment

As societies age more rapidly, there is an ever greater need for mobile dental treatment. Today's ageing population keeps more of their natural teeth, which means a wider range of treatments is required nearer to the patient. VIVA ace combines the functionality of a dental treatment centre in a compact body with multipurpose micromotor, ultrasonic scaler and more. Its lightweight build means it is easy to carry and straight forward to set up in different locations. The first of its kind with high-functionality, supports more comfortable dental treatment wherever the patient.

-  **Lightweight and Compact Body**
-  **High Functionality, Just Like a Treatment Centre**
-  **Straight Forward Set-up and Breakdown**



Lightweight and Compact Body

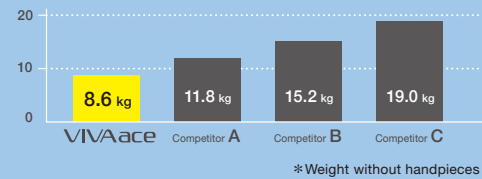
Highly manoeuvrable and lightweight, weighing only 8.6 kg. Its compact size is ideal for stowing in a car, is easily carried up and down stairs and fits into compact spaces. Simple to transport from one patient to another. The small size has been achieved by making each component lightweight and compact without compromising functionality.

All-in-one Package

A micromotor, ultrasonic scaler, 3 in 1 syringe and suction combined in a single compact body including storage space for all instruments.



Lightweight at 8.6 kg*, it can be Taken Anywhere.





Highly Functional Portable Dental System Just Like a Treatment Centre

Excellent efficiency and safety are achieved via both the intuitive and highly visible large LCD control panel and the superb functionality provided by each individual instrument. A high functionality system just like a treatment centre.

Advanced
Functionality in a
Compact Body



Suction

Ultrasonic scaler

Micromotor

3 in 1 syringe

Suction waste
collection tank

Fresh water tank

Intuitive easy to read
control panel

Foot controls

High Functionality Micromotor

Full endodontic functionality



NLXplus

Ideally suited for all requirements
of state of the art dentistry

	Rotation speed (min ⁻¹)	Torque (Ncm)
General mode	1,000-40,000	4.0
Endodontic mode	100-5,000	0.3-3.0

Multipurpose Ultrasonic Scaler

Comprehensive tip range



Varios2 Lux

NSK iPiezo ultrasonic engine

Provides the appropriate power at the tip end adapting to tooth conditions for firm or soft tartar. Safe scaling is possible even when removing hard tartar.

3 in 1 syringe



Lightweight and simple operating
3 in 1 syringe. The syringe nozzle
uses a simple quick release
mechanism.

Suction



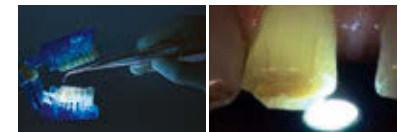
Built in ball lever valve to adjust suction
power.

Light Probe (optional)



isoE-LUX

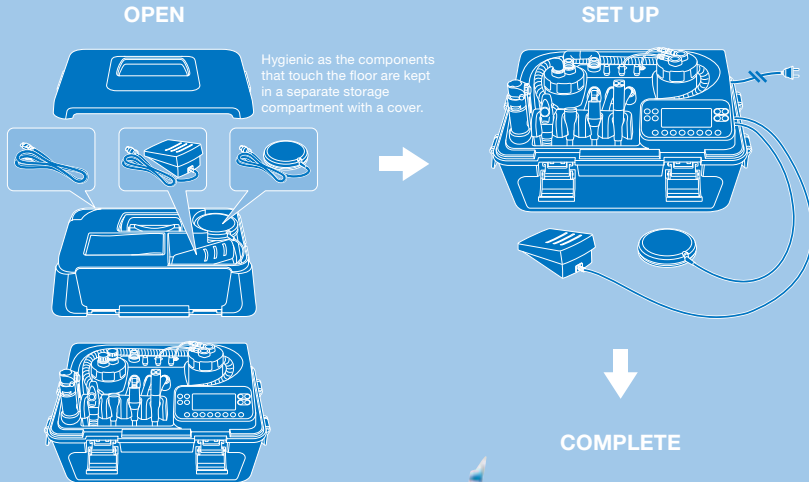
Bright illumination of the oral cavity in any
treatment environment. Good accessibility with a
slim body that also makes it possible to access
hard-to-see areas.





Quick Set up and Storage

Set up and storage is straight forward, simple and quick, making work more efficient and easier. The instrument holders and arm can be set at 4 different levels.

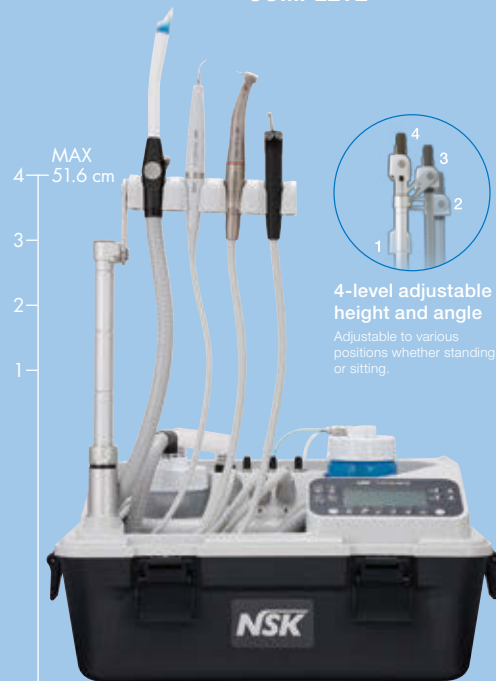


Storage is simple

Remove the handpieces for easy storage.



Very easy to maintain



MODEL VIVA ace Complete Set

ORDER CODE **Y1003773**

Contents

- VIVA ace Basic Set
- VIVA ace Motor Kit
- VIVA ace Scaler Kit



Specifications (Control unit)

- Dimensions : W 462 x D 298 x H 284 (mm)
- Unit weight : 8.6 kg
- Power Supply : AC 100-240 V 50/60 Hz
- Power source input : 130 VA

MODEL VIVA ace Basic Set

ORDER CODE **Y1003774**

Contents

- Control unit
- AC Power Cord
- Foot Control (FC-76S)
- Foot Control (FC-70S)
- Top Case
- V-ace Vacuum Hose Set
- V-ace Vacuum Bottle Set
- V-ace Vacuum Nozzle (10)
- V-ace Water Bottle Set
- V-ace 3 way Syringe Set
- Shoulder Belt



MODEL VIVA ace Motor Kit

ORDER CODE **E1040002**

Contents

- Motor NLX plus
- Motor Cord
- Motor Cap
- Protection Plug



MODEL VIVA ace Scaler Kit

ORDER CODE **E351006**

Contents

- VA2-LUX Handpiece
- Scaler Cord
- Tip (G6, G8)
- Tip Wrench
- Tip Holder



OPTIONS

MODEL isoE-LUX

ORDER CODE **Z1265**



MODEL V-ace Vacuum Nozzle

ORDER CODE **U1144088**

- 10 pcs



VIVAMATE G5 Portable Micromotor Unit

Portable LED Micromotor; From Denture Adjustment to General Applications

As the latest member of pioneer portable micromotor for mobile dentistry, VIVAMATE series, VIVAMATE G5 provides various functions to meet doctors' mobile dentistry needs.



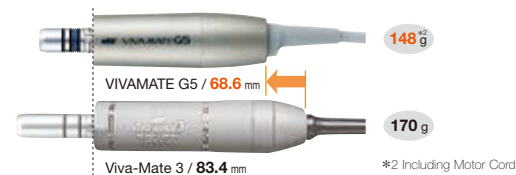
Control Panel Offers Simple and Intuitive Operation

Easy to see necessary information, such as rotation speed setting, power on/off and battery remaining levels. The control panel that allows intuitive operation greatly reduces stress to operate the instrument.

Internal Spray LED Micromotor

The compact size micromotor has been specifically developed for mobile dentistry and weights only 148 g (w/cord) and features internal spray and LED light. Although fully portable it performs like an in-surgery system meeting a wide range of clinical requirements and is compatible with your existing contra-angles and straight handpieces*1 helping you to manage the cost of a mobile dentistry set-up.

*1 Conformable to ISO 3964.



Able to Use Both Rechargeable Battery and AC Adaptor for The Compact Control Unit

Able to operate with rechargeable batteries anywhere. When battery power level is low, just plug in AC adaptor into outlet; bring the unit to patient visits without worry. It is very easy to carry since the control unit is palm-size (W 72 x D 180 x H 36 mm) and weighs only 370 g.

Foot Control (Optional)

Conveniently adjust the motor speed by depressing the pedal of the foot control without taking your eyes of the treatment.



Carrying Case

Comes with a carrying case designed for storing VIVAMATE G5 unit and its attachments.



VIVAMATE G5 Complete Set **LED**

MODEL VIVAMATE G5 230 V SET ORDER CODE Y1002801

Contents

- Control unit
- Handpiece Stand
- Motor (Including Motor Cord)
- AC Adaptor
- AC Power Cord
- Carrying Case

Specifications

[Control Unit]

- Dimensions : W 72 x D 180 x H 36 (mm)
- Weight : 370 g
- Battery recharge time: appx. 2 hours.*
- Battery contentious drive time: appx. 1 hour.*

[Micromotor]

- Dimensions : ø22 x L 68.6 (mm)
- Weight : 148 g (Include Motor cord)
- Speed : 3,000~30,000 min⁻¹
- Torque : 3 Ncm (30,000 min⁻¹ while rotating)

*Varies depending on usage situations.