



CLINICAL
PERFORMANCE
NEVER LOOKED
SO GOOD.

NEW!

SmartLite[®] Pro
Modular LED Curing Light

SmartLite[®] Pro

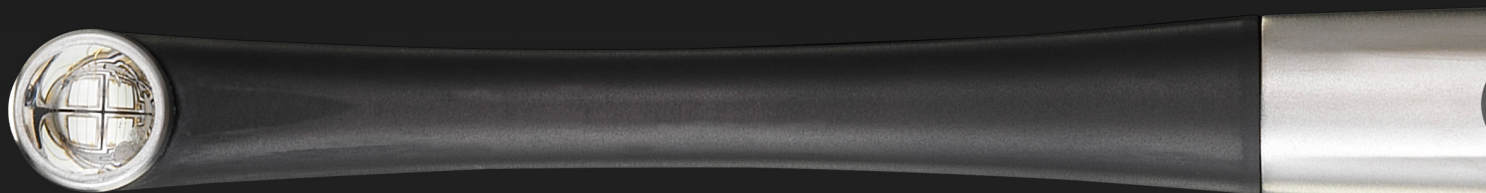
More than just a curing light

⊕ Metal housing

Stainless steel and anodized aluminum provide robust durability, year after year.

⊕ Single-button simplicity

Intuitive one-button operation with audible and tactile signals allows you to focus on what really matters.



⊕ State of the art LED-optics

Optimized 4 LED-light design provides a uniform light distribution over the whole active curing area.
Irradiance: ~1.250 mW/cm²
Wavelength: 453-478 nm

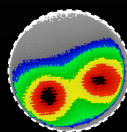
Beam profile comparison at 0 mm distance (Blue Light Range)¹

SmartLite[®] Pro



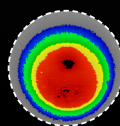
Active Area
78 mm²

Bluephase[®] Style 20i²
(High Mode)



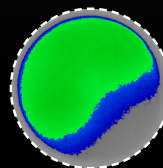
Active Area
43 mm²

D-Light[®] Pro²
(High Mode)



Active Area
38 mm²

Valo[®] Cordless²
(Standard Mode)



Active Area
75 mm²

Irradiance (mW/cm²)



1. Source: BlueLight Analytics Inc.

2. Not a registered trademark of Dentsply Sirona.

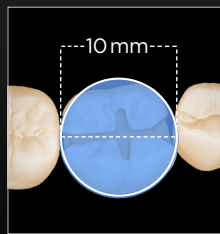
⊕ Versatility

The SmartLite® Pro features a modular design with interchangeable tips for a variety of clinical indications. The design allows for the addition of new tips as technology advances in the future.

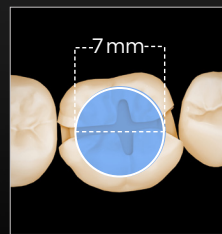


⊕ Reliable clinical outcomes

Large 10 mm active curing diameter to cover bigger restorations combined with an excellent beam collimation³ for reliable curing even over larger distances.



SmartLite® Pro

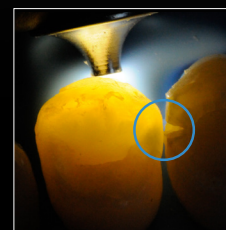


Competitor



⊕ Transillumination diagnostic tip

The additional Transillumination Tip is a diagnostic aid for the visualization of interproximal caries, evaluation of cracked teeth and the illumination of endodontic access. The tip has a 1 mm focused light output with 2 different settings (anterior and posterior).



3. Collimation is when the beams are distributed in parallel for optimal distribution.



Multifunctional charging base

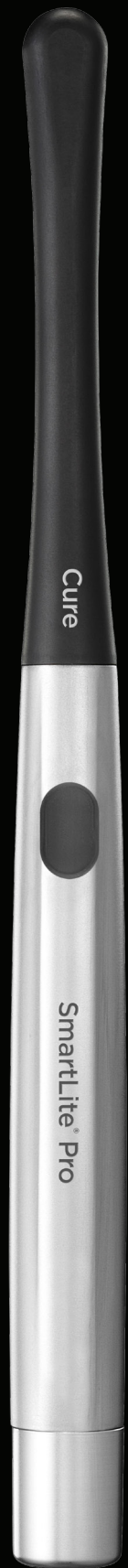
The SmartLite® Pro comes with a modern-design charging base with a built-in Radiometer and room for extra tips. The intuitive battery system includes two quick connect batteries for constant availability. The latest generation LiFePO4 battery technology ensures a full day of clinical operation with only one charge.

Ordering Information

644400	SmartLite® Pro Introductory Kit	1 x Handpiece 1 x Cure Tip 1 x Transillumination Tip 2 x Batteries 1 x Charging Base Accessories
644409	SmartLite® Pro Basic Kit	1 x Handpiece 1 x Cure Tip 2 x Batteries 1 x Charging Base Accessories
644401	SmartLite® Pro Battery Refill	
644402	SmartLite® Pro Sleeves Refill	
644403	SmartLite® Pro Eye Protection Shields Refill	
644404	SmartLite® Pro Power Connector Refill	
644405	SmartLite® Pro Transillumination Tip Refill	
644406	SmartLite® Pro PolyCure Tip Refill	
644407	SmartLite® Pro Cure Tip Refill	



SmartLite® Pro
Modular LED Curing Light



For more information visit www.dentsplysirona.com